

UPDATE ON WATER SUPPLY CONDITIONS

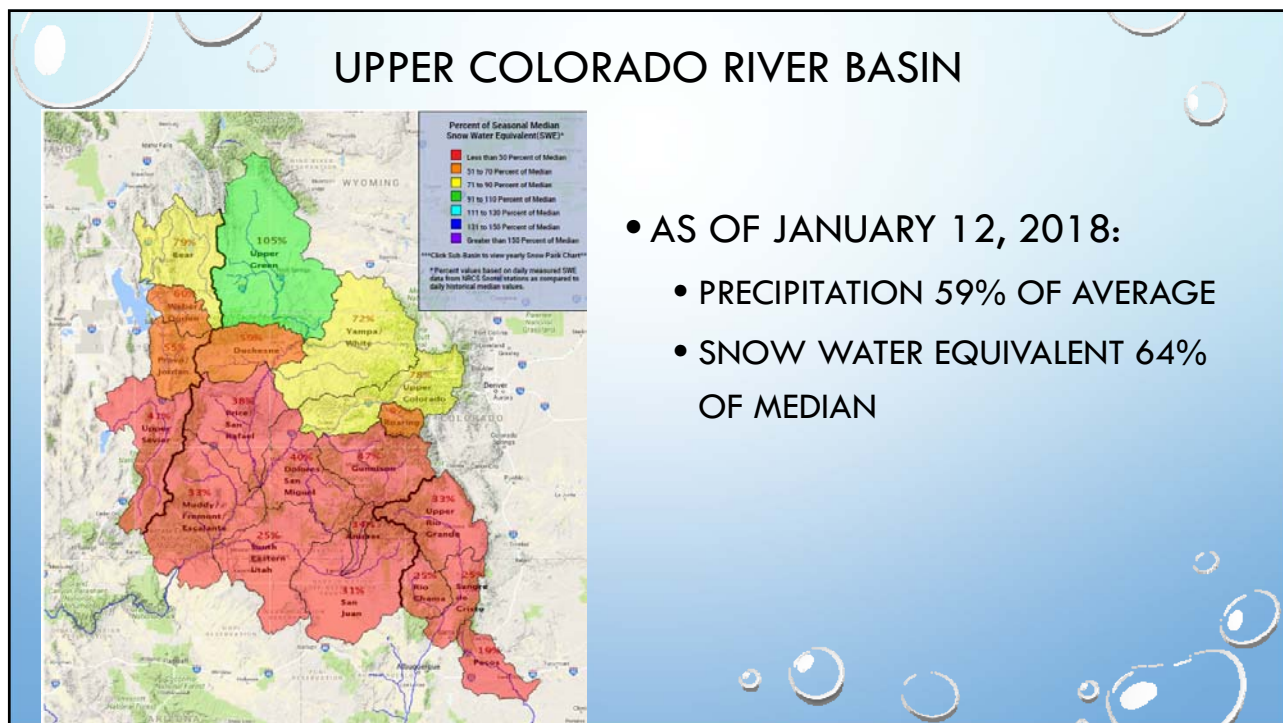
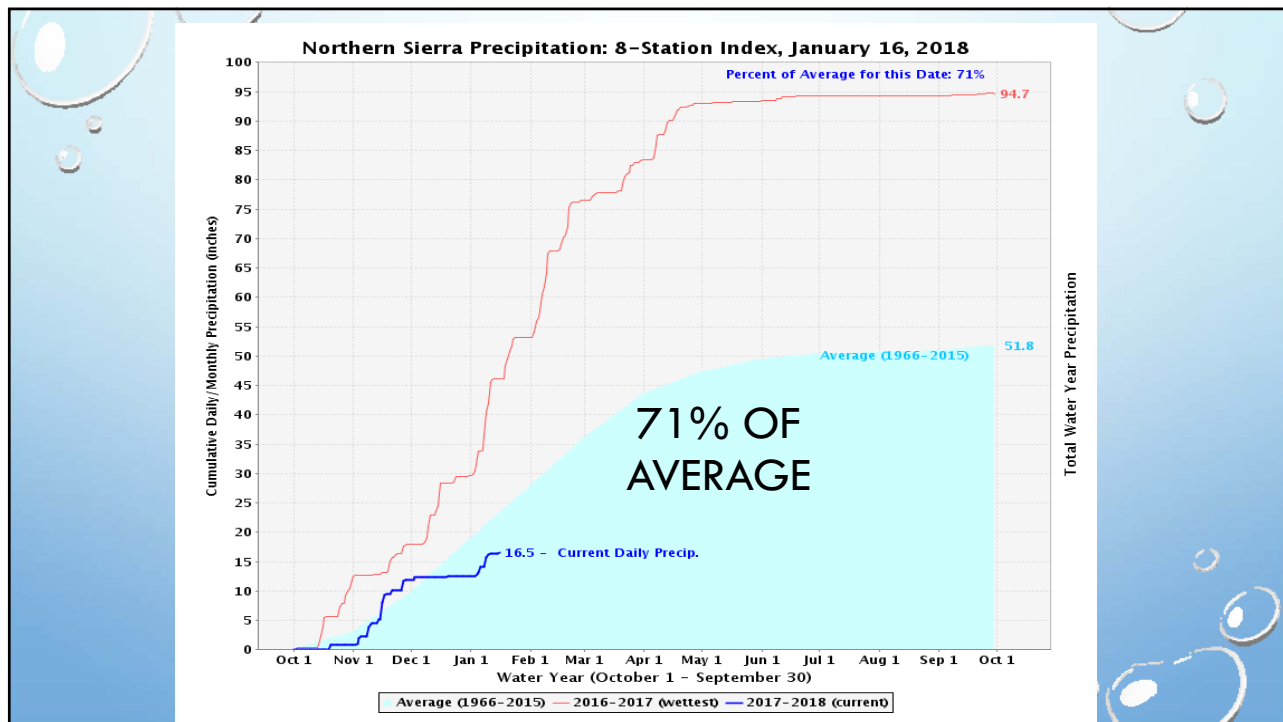
BOARD OF DIRECTORS

JANUARY 18, 2018

INITIAL SNOW SURVEY – JANUARY 3, 2018

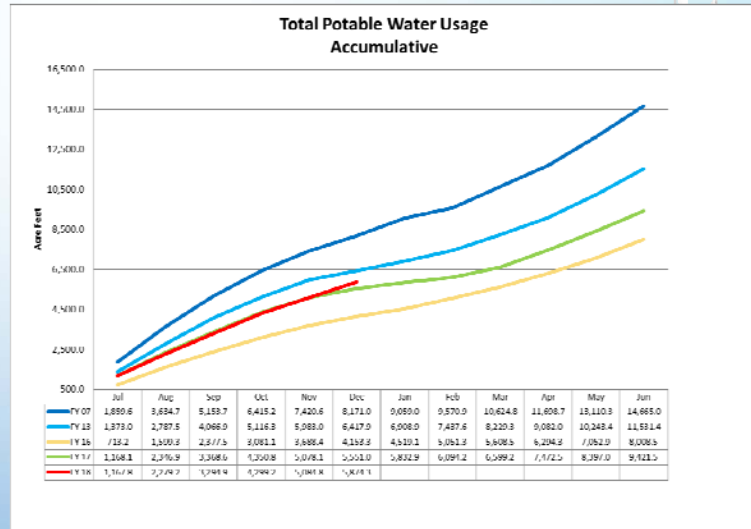
- PHILLIPS STATION
 - DEPTH 1.3 INCHES
 - 3% OF AVERAGE
- STATEWIDE SNOWPACK
 - 24% OF NORMAL



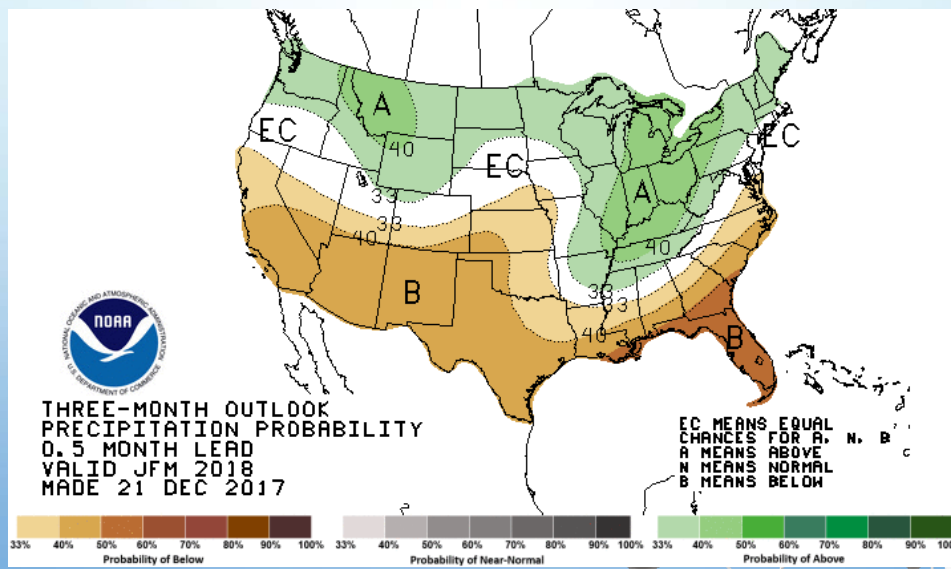


LOCAL WATER CONDITIONS

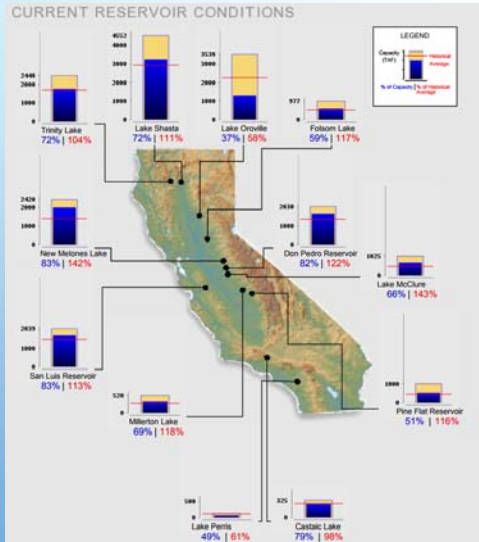
- LAKE HODGES LEVEL:
 - 54.6% OF CAPACITY
- 1.77 INCHES OF RAINFALL
- DECEMBER 2017 WATER DEMANDS WERE 40% HIGHER THAN DECEMBER 2016



THREE MONTH OUTLOOK IS DRY



2018 WATER DEMANDS WILL BE MET



- WET CONDITIONS LAST WINTER HELPED TOP UP RESERVOIRS
- STATEWIDE, RESERVOIRS ARE AT 108% OF AVERAGE
- SDCWA PROJECTS WATER DEMANDS TO BE MET